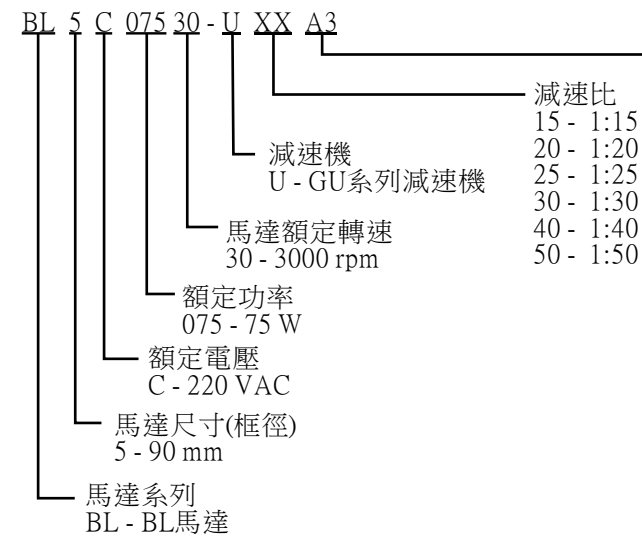


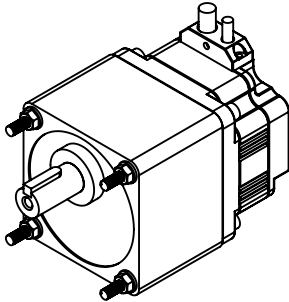
產品編號 (Part Number)	減速比 (Gear Ratio)	減速機額定轉矩 (Gearhead Rated Torque)	容許懸吊載重 (Permissible Overhung Load)	容許推力載重 (Permissible Thrust Load)	馬達轉速對應減速機輸出轉矩 (Gearhead Output Tq. by Motor Speed)
					馬達轉速 (Motor Speed) 100~3500 r/min
BL5C07530-U15A3	15.27	10 N-m	360 N (36 Kg)	120 N (12 Kg)	2.89 N-m
BL5C07530-U20A3	19.545	13 N-m	400 N (40 Kg)	120 N (12 Kg)	3.70 N-m
BL5C07530-U25A3	26.729	15 N-m	400 N (40 Kg)	120 N (12 Kg)	5.07 N-m
BL5C07530-U30A3	30.352	18 N-m	400 N (40 Kg)	120 N (12 Kg)	5.75 N-m
BL5C07530-U40A3	40.284	20 N-m	400 N (40 Kg)	120 N (12 Kg)	7.64 N-m
BL5C07530-U50A3	50.356	20 N-m	400 N (40 Kg)	120 N (12 Kg)	8.59 N-m


馬達特性規格 (Motor Performance Spec.)		換相時序圖 (Commutation Sequence) 8P / from motor bottom, C.C.W					
額定電壓 (Rated Voltage)	220 VAC	馬達 (Motor Cable)					
無載轉速 (No Load Speed)	4500 r/min						
無載電流 (No Load Current)	0.3 A	U	V	W	S1	S2	S3
轉向 (Direction of Rotation)	C.W	X	Low	Hi	1	1	0
額定功率 (Rated Power)	75 W	Hi	Low	X	0	1	0
額定轉矩 (Rated Torque)	0.26 N-m	Hi	X	Low	0	1	1
起動轉矩 (Starting Torque)	0.52 N-m	X	Hi	Low	0	0	1
額定輸入電流 (Rated Input Current)	1.0 A	Low	Hi	X	1	0	1
額定相電流 (Reated Phase Current)	0.37 A	Low	X	Hi	1	0	0
額定轉速 (Rated Speed)	3000 r/min						
線間電阻 (L-L Resistance)	32.7 mΩ						
耐壓測試 (Hi-Pot)	1000 VAC/ 1mA / 1sec.						
絕緣測試 (Insulation Test)	500 VDC / 50 MΩ min.						
反電動勢 (Back Emf)	49.1 V/krpm						

產品編號說明
(Part Number Information)



出軸
A - 平行軸(鍵槽圓軸)
3 - Φ18 mm, M6xP1.0, 牙深10 mm



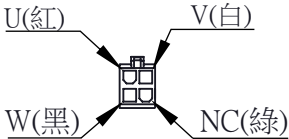
標題(TITLE)	BLDC Motor Parallel Shaft Gearhead							NOTES		
型號(MODEL)	BL5C07530-UXXA3							TOLERANCE TO BE FOLLOWINGS UNLESS OTHERWISE BE SPECIFIED:		
規格(SPEC.)	BL系列, 220VAC, 75W, 3000RPM 無刷馬達, 1:XX平行軸減速機	1.0	ESD-405	Regan		Gear	2019/1/18	LENGTH (mm)	TOLERANCE	UNIT: mm
								0~30 (included)	±0.20mm	SHEET NO: 1/2
								30~120 (included)	±0.30mm	
								120~315 (included)	±0.50mm	
DWG NO.	SD-06-S0360	VER	ECO NO.	DRWN	CH'KD	APPR	Date	315~1000 (included)	±0.80mm	SIZE: A4
								OVER 1000	±1.20mm	



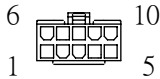
創盟電子工業股份有限公司
TRUMMAN TECHNOLOGY CORP

Molex 5557-10R-225 腳位定義 (Pin Function)			
PIN	功能 (Function)	線色 (Color)	線規 (Remark)
1	OT-	黑(Black)	UL 2517 Cable, 105°C, 300V AWG24(UL 1430)x7C (Yellow, Green, Brown, Red, Orange, White, Black)隔離網+錫箔
2	Hall_Gnd	綠(Green)	
3	Hall_Gnd	X	
4	Hall_+V	黃(Yellow)	
5	Shield	隔離網(Braid)	
6	OT+	白(White)	
7	Hall_U	棕(Brown)	
8	Hall_V	紅(Red)	
9	Hall_W	橙(Orange)	
10	Gnd	X	

馬達動力線 腳位定義 (Pin Function)		
功能(Function)	線色(Color)	線規(Remark)
U	紅(Red)	UL 2733 Cable, 105°C, 600V, AWG18x4C
V	白(White)	
W	黑(Black)	
NC	綠(Green)	

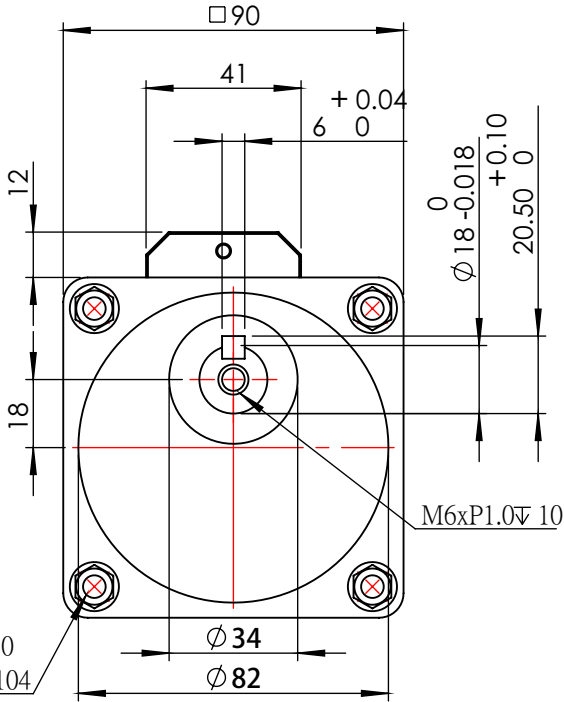
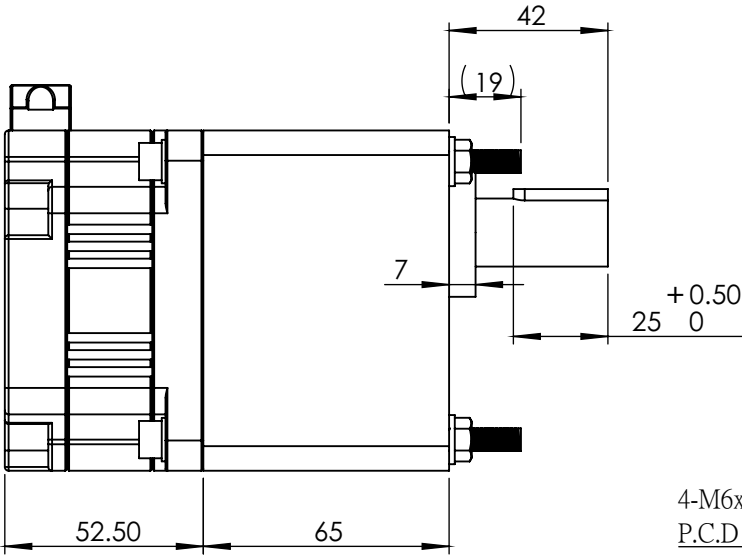
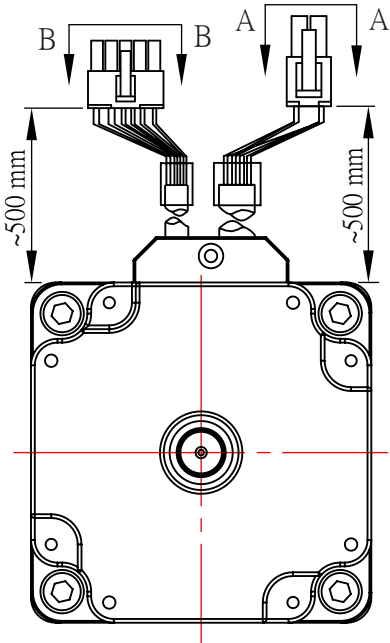


Molex 5557-04R
(A-A VIEW)



Molex 5557-10R
(B-B VIEW)

※隨貨附單頭圓鍵6x6x25



型號(MODEL)	BL5C07530-UXXA3
Doc Number:	SD-06-S0360

NOTES	
TOLERANCE TO BE FOLLOWINGS UNLESS OTHERWISE BE SPECIFIED:	
LENGTH (mm)	TOLERANCE
0~30 (included)	±0.20mm
30~120 (included)	±0.30mm
120~315 (included)	±0.50mm
315~1000 (included)	±0.80mm
OVER 1000	±1.20mm

THIRD ANGLE PROJECTION	
UNIT:	mm
SHEET NO:	2/2
SCALE:	1:2
SIZE:	A4



創盟電子工業股份有限公司
TRUMMAN TECHNOLOGY CORP