

產品編號 (Part Number)	減速比 (Gear Ratio)	減速機額定轉矩 (Gearhead Rated Torque)	容許懸吊載重 (Permissible Overhung Load)	容許推力載重 (Permissible Thrust Load)	馬達轉速對應減速機輸出轉矩 (Gearhead Output Tq. by Motor Speed)	
					馬達轉速 (Motor Speed) 100~3000 r/min	馬達轉速 (Motor Speed) 3500~ r/min
ELVM2K08030-GSP2050A	1:50	48 N-m	1180 N	590 N	11.7 N-m	11.7 N-m

馬達特性規格 (Motor Performance Spec.)		換相時序圖 (Commutation Sequence) 8P / from motor bottom, C.C.W					
額定電壓 (Rated Voltage)	24 VDC	馬達 (Motor Cable)			霍爾信號 (Hall Signal)		
無載轉速 (No Load Speed)	4600 r/min	U	V	W	S1	S2	S3
無載電流 (No Load Current)	0.9 A	X	Low	Hi	1	1	0
轉向 (Direction of Rotation)	C.W	Hi	Low	X	0	1	0
額定功率 (Rated Power)	80 W	Hi	X	Low	0	1	1
額定轉矩 (Rated Torque)	0.26 N-m	X	Hi	Low	0	0	1
起動轉矩 (Starting Torque)	0.52 N-m	Low	Hi	X	1	0	1
額定輸入電流 (Rated Input Current)	5.6 A	Low	X	Hi	1	0	0
額定相電流 (Reated Phase Current)	8.8 A						
額定轉速 (Rated Speed)	3000 r/min						
線間電阻 (L-L Resistance)	450 mΩ						
耐壓測試 (Hi-Pot)	1000 VAC / 1mA / 1sec.						
絕緣測試 (Insulation Test)	500 VDC / 50 MΩ min.						
反電動勢 (Back Emf)	3.9 V/krpm						

產品編號說明
(Part Number Informaton)

ELVM 5 K 080 30 - SP 2 050 A

A: 平行軸(鍵槽圓軸)

減速比
050 - 1:50

減速機尺寸(框徑)
2 - 60 mm

SP - GSP系列伺服行星減速機

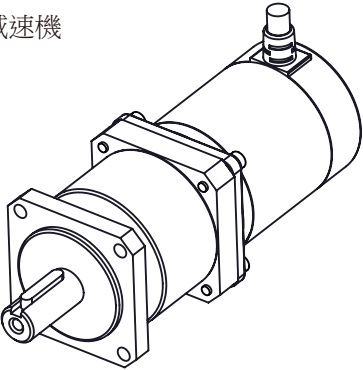
馬達額定轉速
30 - 3000r/min


額定功率
080 - 80W

額定電壓
K - 24VDC

馬達尺寸(框徑)
2 - 60 mm

馬達系列
ELVM - 搭配ELV系列驅動器



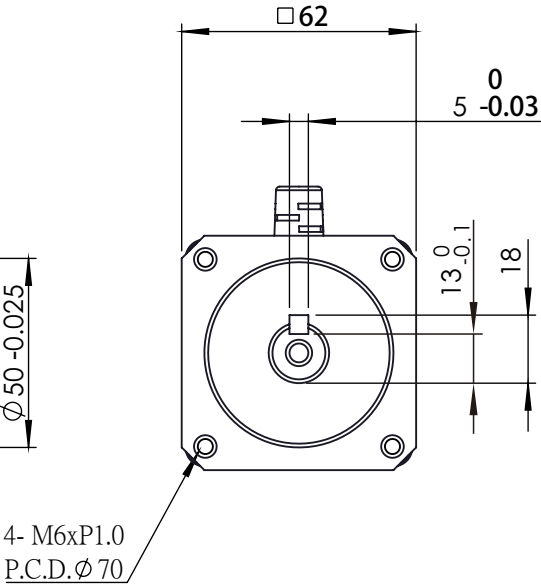
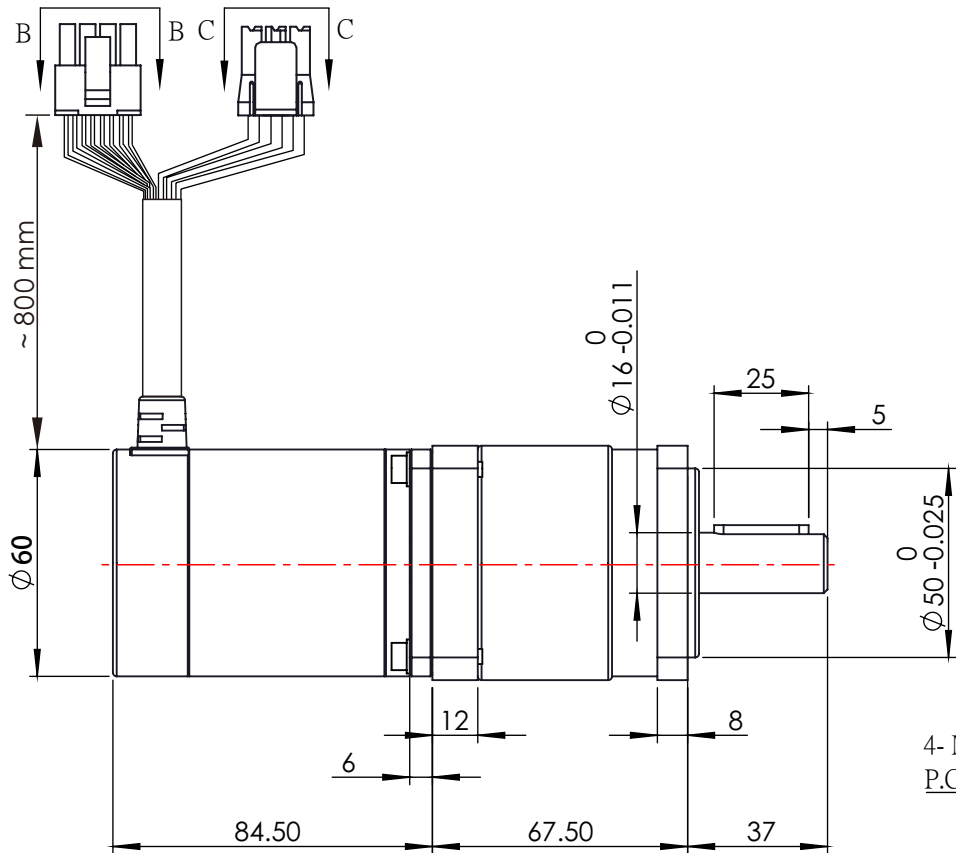
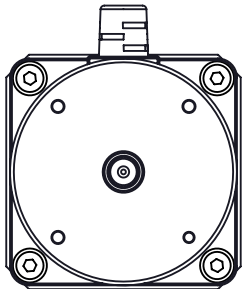
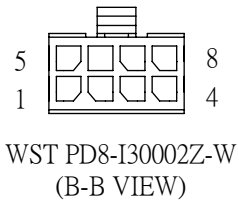
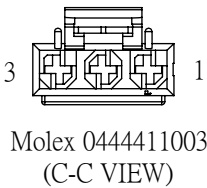
標題(TITLE)	BLDC Motor Servo Planetary Gearhead							NOTES		
								TOLERANCE TO BE FOLLOWINGS UNLESS OTHERWISE BE SPECIFIED:		
型號(MODEL)	ELVM2K08030-SP2050A							LENGTH (mm)	TOLERANCE	UNIT: mm
規格(SPEC.)	ELV系列, 24VDC, 80W, 3000RPM, 無刷馬達, 1:50伺服行星減速機	1.0	ESD-407	Regan		Gear	2019/1/22	0~30 (included)	±0.20mm	SHEET NO: 1/2
								30~120 (included)	±0.30mm	SCALE: —
								120~315 (included)	±0.50mm	
								315~1000 (included)	±0.80mm	
DWG NO.	SD-06-S0362	VER	ECO NO.	DRWN	CH'KD	APPR	DATE	OVER 1000	±1.20mm	SIZE: A4



創盟電子工業股份有限公司
TRUMMAN TECHNOLOGY CORP

WST PD8-I30002Z 腳位定義 (Pin Function)			
PIN	功能 (Function)	線色 (Color)	線規 (Reamrk)
1	Null	X	UL 3266 AWG#24
2	OT+	白(White)	
3	OT-	黑(Black)	
4	Hall_Gnd	綠(Green)	
5	S1	棕(Brown)	
6	S2	紅(Red)	
7	S3	橙(Orange)	
8	Hall_Vcc	黃(Yellow)	

Molex 0444411003 腳位定義 (Pin Function)			
PIN	功能(Function)	線色(Color)	線規(Remark)
1	U	紅(Red)	UL 3266 AWG#18
2	V	白(White)	
3	W	黑(Black)	



型號(MODEL)	ELVM2K08030-SP2050A
DWG NO.	SD-06-S0362

NOTES		THIRD ANGLE PROJECTION
TOLERANCE TO BE FOLLOWINGS UNLESS OTHERWISE BE SPECIFIED:		
LENGTH (mm)	TOLERANCE	UNIT: mm
0~30 (included)	±0.20mm	SHEET NO: 2/2
30~120 (included)	±0.30mm	
120~315 (included)	±0.50mm	SCALE: 1:2
315~1000 (included)	±0.80mm	SIZE: A4
OVER 1000	±1.20mm	



創盟電子工業股份有限公司
TRUMMAN TECHNOLOGY CORP