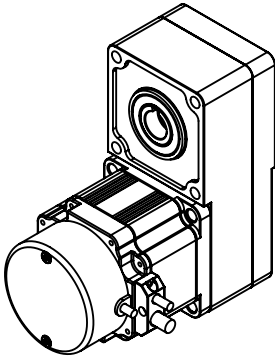
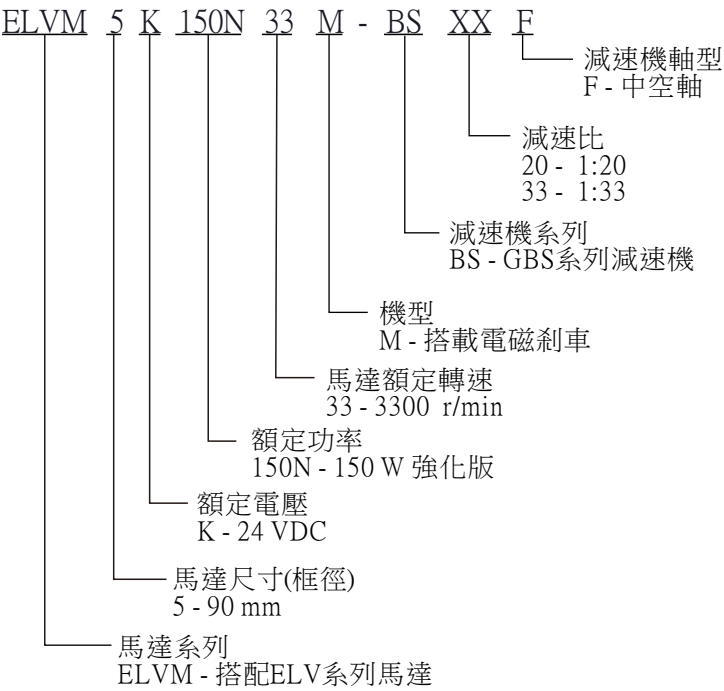



產品編號 (Part Number)	減速比 (Gear Ratio)	減速機額定轉矩 (Gearhead Rated Torque)	容許懸吊載重 (Permissible Overhung Load)	容許推力載重 (Permissible Thrust Load)	馬達轉速對應減速機輸出轉矩 (Gearhead Output Tq. by Motor Speed)		容許轉動慣量 (Permissible Inertia I) [x10 ⁻⁴ kg·m ²]	急停或瞬時正反轉運行時* (When Instantaneous Stop or Bi-Directional Operation is performed)
					馬達轉速 (Motor Speed) 100~3300 r/min	馬達轉速 (Motor Speed) 3500~ r/min		
ELVM5K150N33M-BS20F	20	20 N·m	1300 N (130 Kg)	500 N (50 Kg)	7.77 N·m	5.50 N·m	1400	580
ELVM5K150N33M-BS33F	32.941	20 N·m	1500 N (150 Kg)	500 N (50 Kg)	12.83 N·m	9.10 N·m	3900	1500

馬達特性規格 (Motor Performance Spec.)		換相時序圖 (Commutation Sequence) 8P / from motor bottom, C.C.W					
額定電壓 (Rated Voltage)	24 VDC	馬達 (Motor Cable)			霍爾信號 (Hall Signal)		
額定功率 (Rated Power)	150 W	U	V	W	S1	S2	S3
額定轉速 (Rated Speed)	3300 r/min	X	Low	Hi	1	1	0
無載轉速 (No Load Speed)	4200 r/min	Hi	Low	X	0	1	0
無載電流 (No Load Current)	1.5 A	Hi	X	Low	0	1	1
額定轉矩 (Rated Torque)	0.48 N·m	X	Hi	Low	0	0	1
起動轉矩 (Starting Torque)	0.96 N·m	Low	Hi	X	1	0	1
額定輸入電流 (Rated Input Current)	12 A	Low	X	Hi	1	0	0
耐壓測試(Hi-Pot)	1000 VAC/ 1mA / 1sec.						
絕緣測試(Insulation Test)	500 VDC / 50 MΩ min.						
反電動勢 (Back Emf)	4.1 V/krpm						
總重 (Total Weight)	5.42 Kg						

電磁剎車規格 (Electromagetie Brake Spec.)	
電壓 (Voltage)	24 VDC
功率 (Power)	6.7 W
靜摩擦轉矩 (Static Friction Torque)	2.0 N·m

產品編號說明
(Part Number Information)



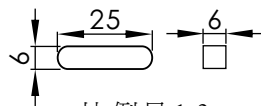
標題(TITLE)	BLDC Motor / Brake Hollow Shaft Flat Gearhead							NOTES		
型號(MODEL)	ELVM5K150N33M-BSXXF							TOLERANCE TO BE FOLLOWINGS UNLESS OTHERWISE BE SPECIFIED:		
規格(SPEC.)	ELV系列, 24VDC, 150W(強化), 3300RPM 無刷馬達, 附電磁剎車, 1:XX平行中空軸減速機	1.0	ESD-455	Regan		Gear	2019/8/16	LENGTH (mm)	TOLERANCE	UNIT: mm
								0~30 (included)	±0.20mm	SHEET NO: 1/3
								30~120 (included)	±0.30mm	
								120~315 (included)	±0.50mm	
DWG NO.	SD-06-S0416	Version	ECO NO.	DRWN	CH'KD	APPR	Date	315~1000 (included)	±0.80mm	SIZE: A4
								OVER 1000	±1.20mm	



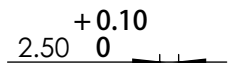
創盟電子工業股份有限公司
TRUMMAN TECHNOLOGY CORP

附件:

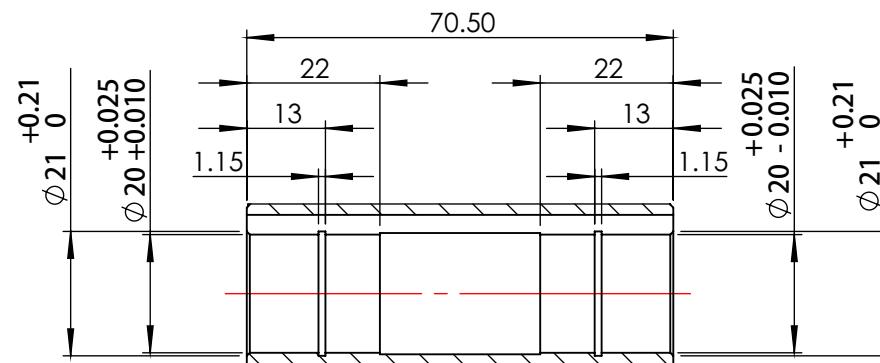
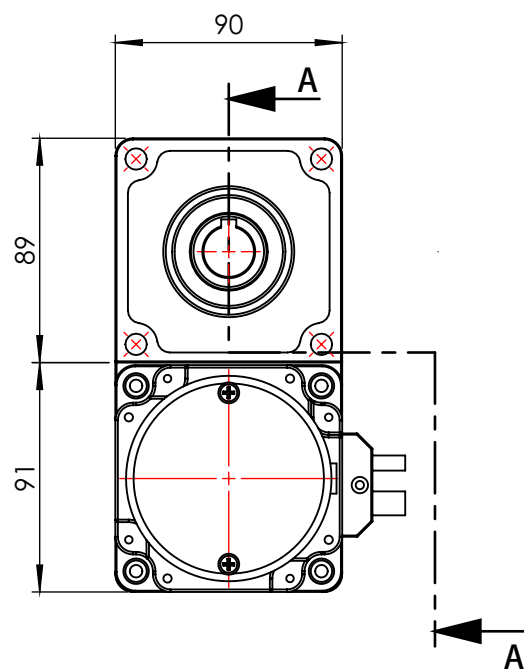
1. 雙圓頭平行鍵 6x6x25 -----1 PCS



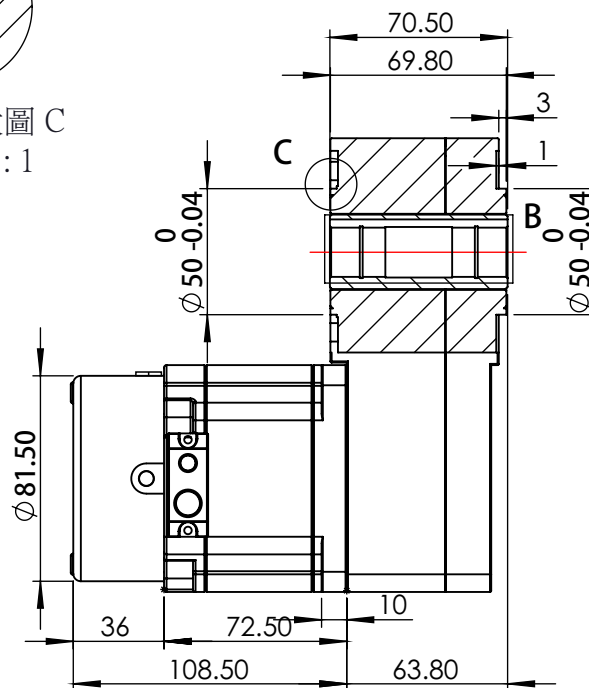
比例尺 1:2



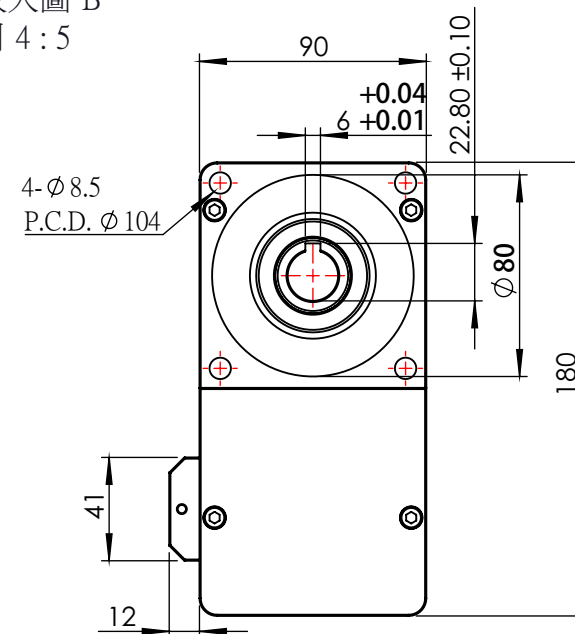
細部放大圖 C
比例 1:1



細部放大圖 B
比例 4:5



剖面圖 A-A



型號(MODEL)	ELV5KM150N33M-BSXXF
DWG NO.	SD-06-S0416

NOTES		THIRD ANGLE PROJECTION	
TOLERANCE TO BE FOLLOWINGS UNLESS OTHERWISE BE SPECIFIED:			
LENGTH (mm)	TOLERANCE	UNIT:	mm
0~30 (included)	±0.20mm	SHEET NO:	2/3
30~120 (included)	±0.30mm	SCALE:	1:3
120~315 (included)	±0.50mm	SIZE:	A4
315~1000 (included)	±0.80mm		
OVER 1000	±1.20mm		



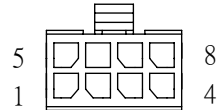
創盟電子工業股份有限公司
TRUMMAN TECHNOLOGY CORP

WST PD8-I30002Z-W 腳位定義 (Pin Function)			
PIN	功能(Function)	線色(Color)	線規(Remark)
1	Null	X	UL 2464 Cable,80 degC, 300V (0.25^2x7C) (white, brown, green, yellow, gray, pink, blue) / braid / PVC flexible Cable
2	OT+	白(White)	
3	OT-	灰(Gray)	
4	Hall Gnd	綠(Green)	
5	S1	棕(Brown)	
6	S2	粉(Pink)	
7	S3	藍(Blue)	
8	Hall Vcc	黃(Yellow)	

PD4-I30002 腳位定義 (Pin Function)			
PIN	功能(Function)	線色(Color)	線規(Remark)
1	Mbrake-	黑(Black)	UL 2517,105℃, 300V / 22AWGx4C. Flexible Cable
2	Null	X	
3	Mbrake+	白(White)	
4	Null	X	

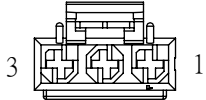


PD4-I30002
(E-E VIEW)

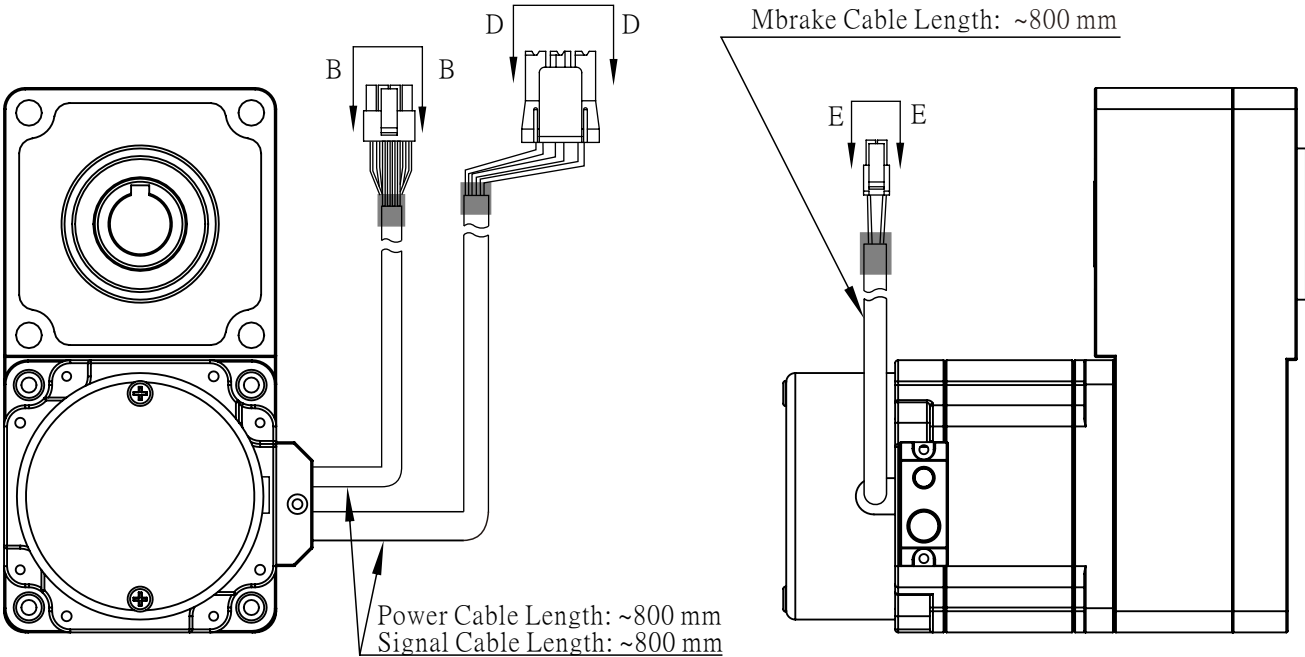


WST PD8-I30002Z-W
(B-B VIEW)

Molex 0444411003 腳位定義 (Pin Function)			
PIN	功能(Function)	線色(Color)	線規(Remark)
1	U	紅(Red)	105℃, 300V 12 AWGx3C Flexible Cable O.D: 8.5
2	V	白(White)	
3	W	黑(Black)	



Molex 0444411003
(D-D VIEW)



型號(MODEL)	ELV5KM150N33M-BSXXF
DWG NO.	SD-06-S0416

NOTES		THIRD ANGLE PROJECTION	
TOLERANCE TO BE FOLLOWINGS UNLESS OTHERWISE BE SPECIFIED:			
LENGTH (mm)	TOLERANCE	UNIT:	mm
0~30 (included)	±0.20mm	SHEET NO:	3/3
30~120 (included)	±0.30mm		
120~315 (included)	±0.50mm	SCALE:	---
315~1000 (included)	±0.80mm	SIZE:	A4
OVER 1000	±1.20mm		



創盟電子工業股份有限公司
TRUMMAN TECHNOLOGY CORP