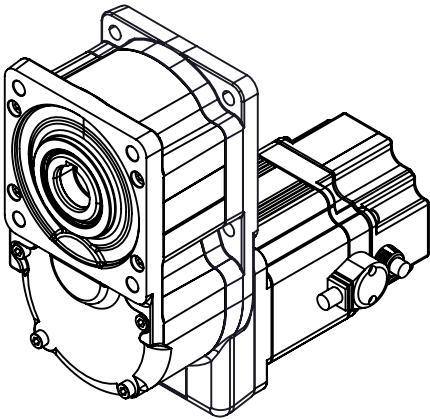
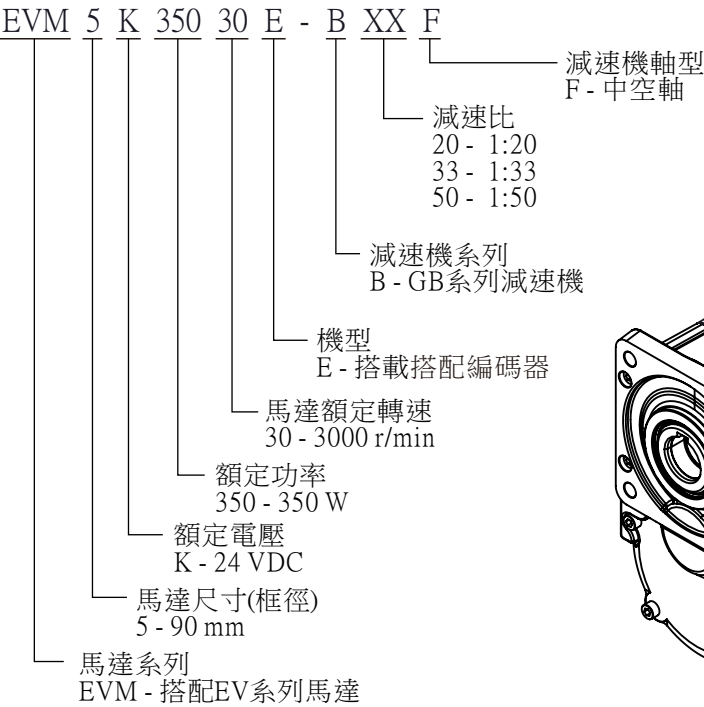



產品編號 (Part Number)	減速比 (Gear Ratio)	減速機額定轉矩 (Gearhead Rated Torque)	容許懸吊載重 (Permissible Overhung Load)	容許推力載重 (Permissible Thrust Load)	馬達轉速對應減速機輸出轉矩 (Gearhead Output Tq. by Motor Speed)	
					馬達轉速 (Motor Speed) 100~3000 r/min	馬達轉速 (Motor Speed) 3500~ r/min
EVM5K35030E-B20F	20.87121212	22.1 N-m	1680 N (168 Kg)	300 N (30 Kg)	17.82 N-m	7.93 N-m
EVM5K35030E-B30F	29.21969697	33.2 N-m	1680 N (168 Kg)	300 N (30 Kg)	26.73 N-m	11.9 N-m
EVM5K35030E-B50F	50.56198347	55.3 N-m	2040 N (204 Kg)	300 N (30 Kg)	44.55 N-m	19.84 N-m

※註：減速機運轉方向與馬達轉向相反

馬達特性規格 (Motor Performance Spec.)		換相時序圖 (Commutation Sequence) 8P / from motor bottom, C.C.W					
額定電壓 (Rated Voltage)	24 VDC	馬達 (Motor Cable)			霍爾信號 (Hall Signal)		
無載轉速 (No Load Speed)	4200 r/min	U	V	W	S1	S2	S3
轉向 (Direction of Rotation)	C.W.	X	Low	Hi	1	1	0
額定功率 (Rated Power)	350 W	Hi	Low	X	0	1	0
額定轉矩 (Rated Torque)	1.1 N-m	Hi	X	Low	0	1	1
起動轉矩 (Starting Torque)	2.2 N-m	X	Hi	Low	0	0	1
額定輸入電流 (Rated Input Current)	18 A	Low	Hi	X	1	0	1
額定相電流 (Reated Phase Current)	17.5A	Low	X	Hi	1	0	0
額定轉速 (Rated Speed)	3000 r/min						
線間電阻 (L-L Resistance)	65 mΩ						
耐壓測試(Hi-Pot)	1000 VAC/ 1mA / 1sec.						
絕緣測試(Insulation Test)	500 VDC / 50 MΩ min.						
反電動勢 (Back Emf)	4.17 V/krpm						

產品編號說明
(Part Number Information)

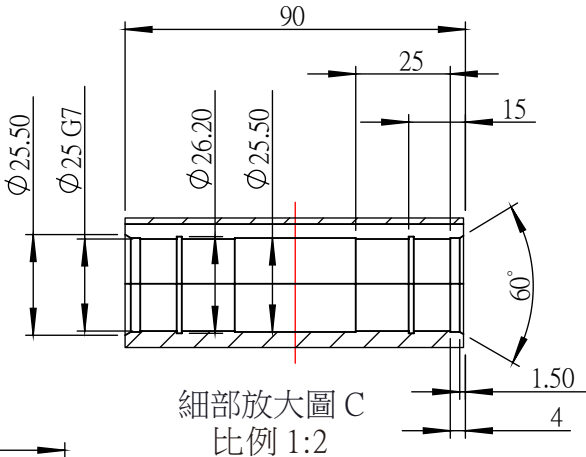
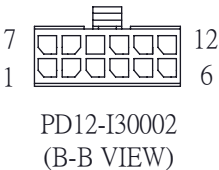


標題(TITLE)	BLDC Motor / Encoder Hollow Shaft Flat Gearhead	4.0	ESD-403	Regan	Ruby	Gear	2019/2/19	NOTES		
型號(MODEL)	EVM5K35030E-BXXF	3.0	ESD-196	Regan		Gear	2018/7/20	TOLERANCE TO BE FOLLOWINGS UNLESS OTHERWISE BE SPECIFIED:		
								LENGTH (mm)	TOLERANCE	UNIT: mm
								0~30 (included)	±0.20mm	SHEET NO: 1/2
								30~120 (included)	±0.30mm	
規格(SPEC.)	EV系列, 24VDC, 350W, 3000RPM 無刷馬達, 附編碼器, 1:XX平行中空軸減速機	2.0	ESD-177	Regan		Gear	2018/3/30	120~315 (included)	±0.50mm	SCALE: ---
		1.0	ECO-104	Regan	Tiffany	Gear	2016/9/08	315~1000 (included)	±0.80mm	SIZE: A4
DWG NO.	SD-06-S0266	VER	ECO NO.	DRWN	CH'KD	APPR	DATE	OVER 1000	±1.20mm	



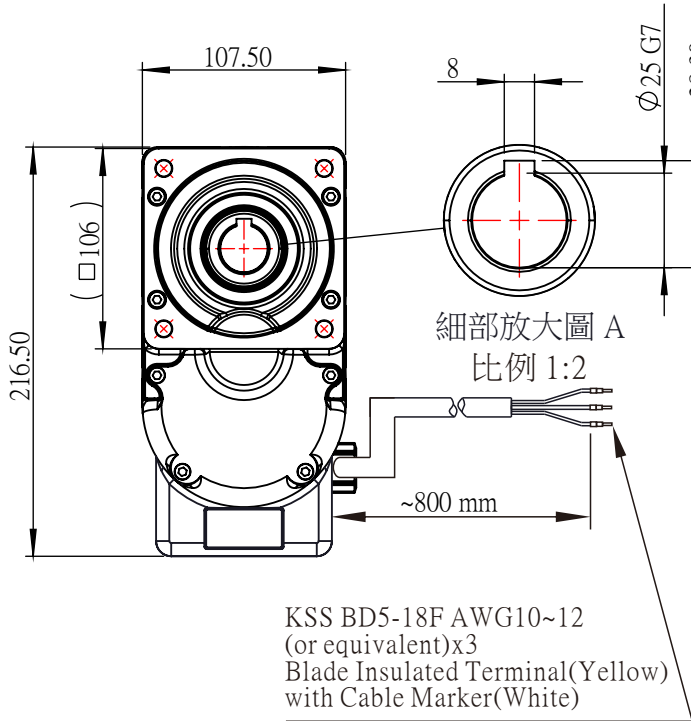
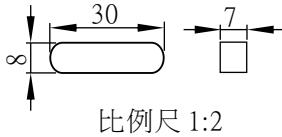
創盟電子工業股份有限公司
TRUMMAN TECHNOLOGY CORP

PD12-I30002 腳位定義 (Pin Function)			
PIN	功能 (Function)	線色 (Color)	線規 (Remark)
1	Shield	隔離網(Braid)	UL 2464耐撓曲Cable, 80℃, 300V, (5x(2x0.25^2)) 對絞有隔離網. (White, Brown) (Green, Yellow) (Gray, Pink) (Blue, Red) (Black, Purple)
2	OT-	黑(Black)	
3	Z / W	藍(Blue)	
4	B / V	灰(Gray)	
5	A / U	綠(Green)	
6	GND	白(White)	
7	Null	X	
8	OT+	紫(Purple)	
9	Z / W	紅(Red)	
10	B / V	粉(Pink)	
11	A / U	黃(Yellow)	
12	+5V	棕(Brown)	

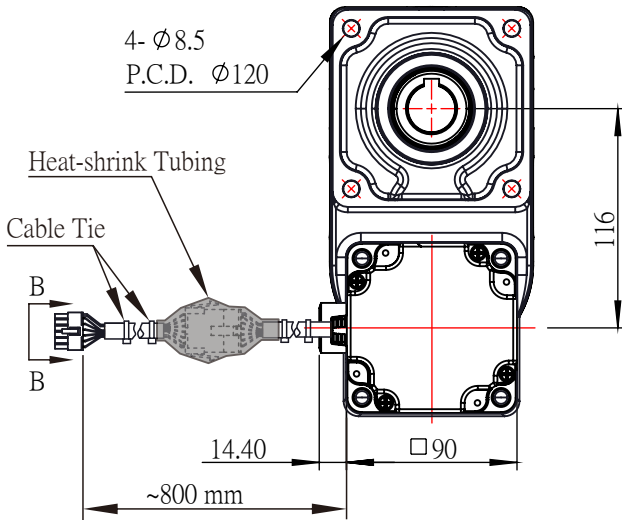
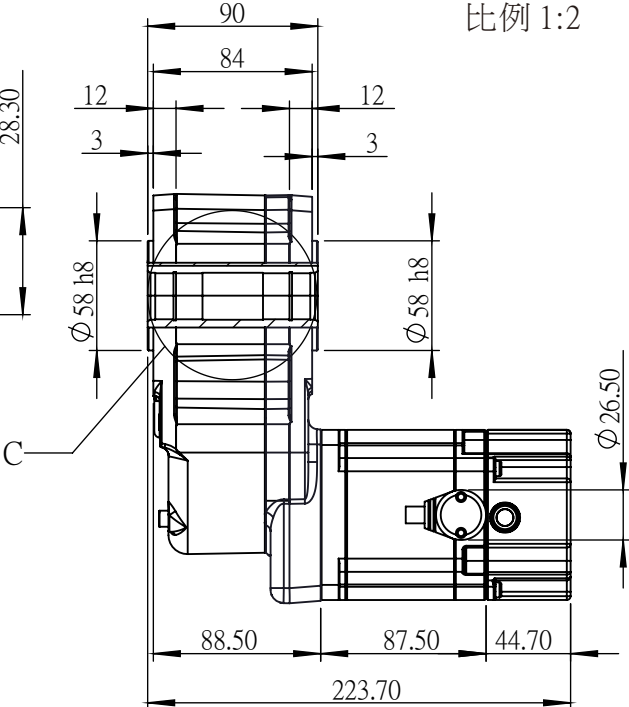


馬達動力線 腳位定義 (Pin Function)		
功能(Function)	線色(Color)	線規(Remark)
U	紅 (Red)	105℃, 300V, 12 AWGx3C 耐油曲, OD:8.5mm
V	白(White)	
W	黑(Black)	

附件:
1. 雙圓頭平行鍵 8x7x30 -----1 PCS



KSS BD5-18F AWG10~12
(or equivalent)x3
Blade Insulated Terminal(Yellow)
with Cable Marker(White)



NOTES	
TOLERANCE TO BE FOLLOWINGS UNLESS OTHERWISE BE SPECIFIED:	
LENGTH (mm)	TOLERANCE
0~30 (included)	±0.20mm
30~120 (included)	±0.30mm
120~315 (included)	±0.50mm
315~1000 (included)	±0.80mm
OVER 1000	±1.20mm

THIRD ANGLE PROJECTION	
UNIT:	mm
SHEET NO:	2/2
SCALE:	1:4
SIZE:	A4

型號(MODEL)	EVM5K35030E-BXXF
DWG NO.	SD-06-S0266

DEXMART
創盟電子工業股份有限公司
TRUMMAN TECHNOLOGY CORP