

產品編號 (Part Number)	減速比 (Gear Ratio)	減速機額定轉矩 (Gearhead Rated Torque)	容許懸吊載重 (Permissible Overhung Load)	容許推力載重 ( Permissible Thrust Load)	馬達轉速對應減速機輸出轉矩 (Gearhead Output Tq. by Motor Speed)
					馬達轉速 (Motor Speed) 100~3300 r/min
EVM5K35030E-STC20F2T2-01	20	48 N-m	3200 N (320 Kg)	1600 N (160 Kg)	19.9 N-m

馬達特性規格 (Motor Performance Spec.)		換相時序圖 (Commutation Sequence ) 8P / from motor bottom, C.C.W					
額定電壓 (Rated Voltage )	24 VDC	馬達 (Motor Cable)			霍爾信號 (Hall Signal)		
無載轉速 (No Load Speed)	4200 r/min	U	V	W	S1	S2	S3
無載電流 (No Load Current)	1.7 A	X	Low	Hi	1	1	0
轉向 (Direction of Rotation)	C.W	Hi	Low	X	0	1	0
額定功率 (Rated Power)	350 W	Hi	X	Low	0	1	1
額定轉矩 (Rated Torque)	1.1 N-m	X	Hi	Low	0	0	1
起動轉矩 (Starting Torque)	2.2 N-m	Low	Hi	X	1	0	1
額定輸入電流 (Rated Input Current)	18 A	Low	X	Hi	1	0	0
額定相電流 (Rated Phase Current)	17.5 A						
額定轉速 (Rated Speed)	3000 r/min						
線間電阻 (L-L Resistance)	65 mΩ						
耐壓測試(Hi-Pot)	1000 VAC/ 1mA / 1sec.						
絕緣測試(Insulation Test)	500 VDC / 50 MΩ min.						
反電動勢 (Back Emf)	4.17 V/krpm						

產品編號說明  
( Part Number Information )

EVM5K35030E-STC20F2T2-01

01 - 組裝客製流水碼  
減速機與馬達組裝角度270°

2 - 背隙等級(Backlash): ≤9 arc min

T - 滾錐軸承 (Taper Bearing)

F2 - 出力軸徑Ø22

20 - 減速比1:20

STC - GST系列直交減速機, C型

E - 搭配編碼器(Encoder)

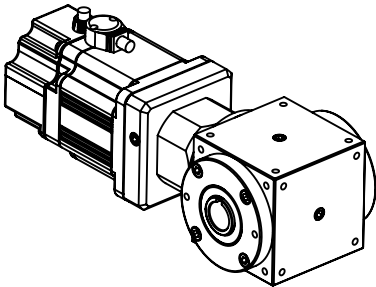
30 - 3000rpm

350 - 350W

K - 24 VDC

5 - 90框

EVM - EV系列馬達



標題(TITLE)	BLDC Motor / Encoder Right-Angle Hollow Shaft Gearhead							NOTES	
								TOLERANCE TO BE FOLLOWINGS UNLESS OTHERWISE BE SPECIFIED:	THIRD ANGLE PROJECTION
型號(MODEL)	EVM5K35030E-STC20F2T2-01	2.0	ESD-399	Regan	Ruby	Gear	2019/03/26	LENGTH (mm)	TOLERANCE
規格(SPEC)	Ev系列, 24VDC, 350W, 3000RPM 無刷馬達, 附編碼器, 1:20直交中空軸減速機	1.1	ESD-399	Regan		Gear	2018/12/24	0~30 (included)	±0.20mm
								30~120 (included)	±0.30mm
		1.0	ESD-388	Regan		Gear	2018/12/10	120~315 (included)	±0.50mm
								315~1000 (included)	±0.80mm
DWG NO.	SD-06-S0339	VER	ECO NO.	DRWN	CH'KD	APPR	DATE	OVER 1000	±1.20mm

THIRD ANGLE PROJECTION

UNIT: mm

SHEET NO: 1/3

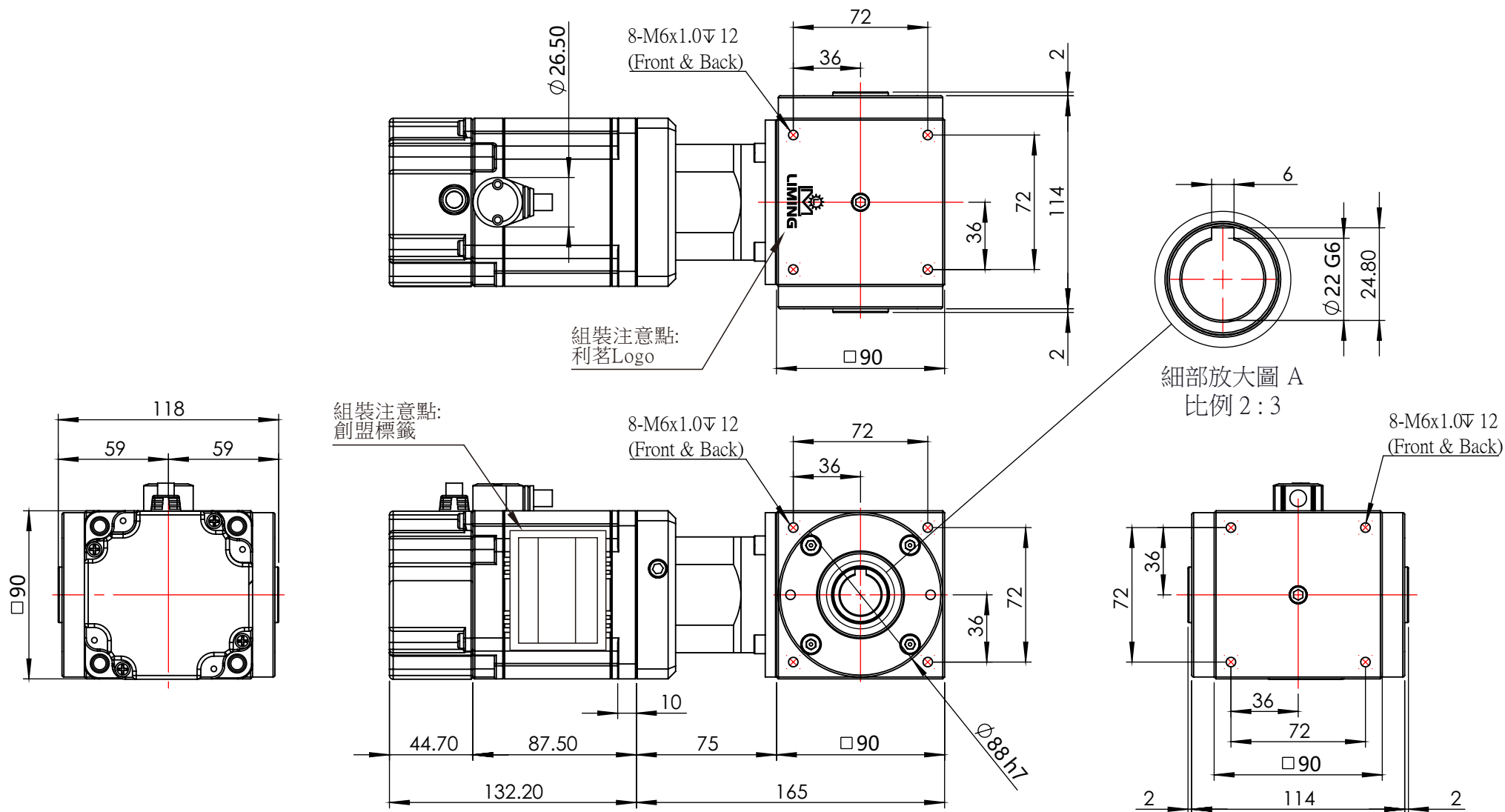
SCALE: ---

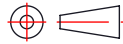
SIZE: A4

DEXMART

創盟電子工業股份有限公司

TRUMMAN TECHNOLOGY CORP



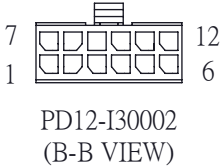
NOTES		THIRD ANGLE PROJECTION	
TOLERANCE TO BE FOLLOWINGS UNLESS OTHERWISE BE SPECIFIED:			
LENGTH (mm)	TOLERANCE	UNIT:	mm
0~30 (included)	±0.20mm	SHEET NO:	2/3
30~120 (included)	±0.30mm	SCALE:	1:3
120~315 (included)	±0.50mm	SIZE:	A4
315~1000 (included)	±0.80mm		
OVER 1000	±1.20mm		



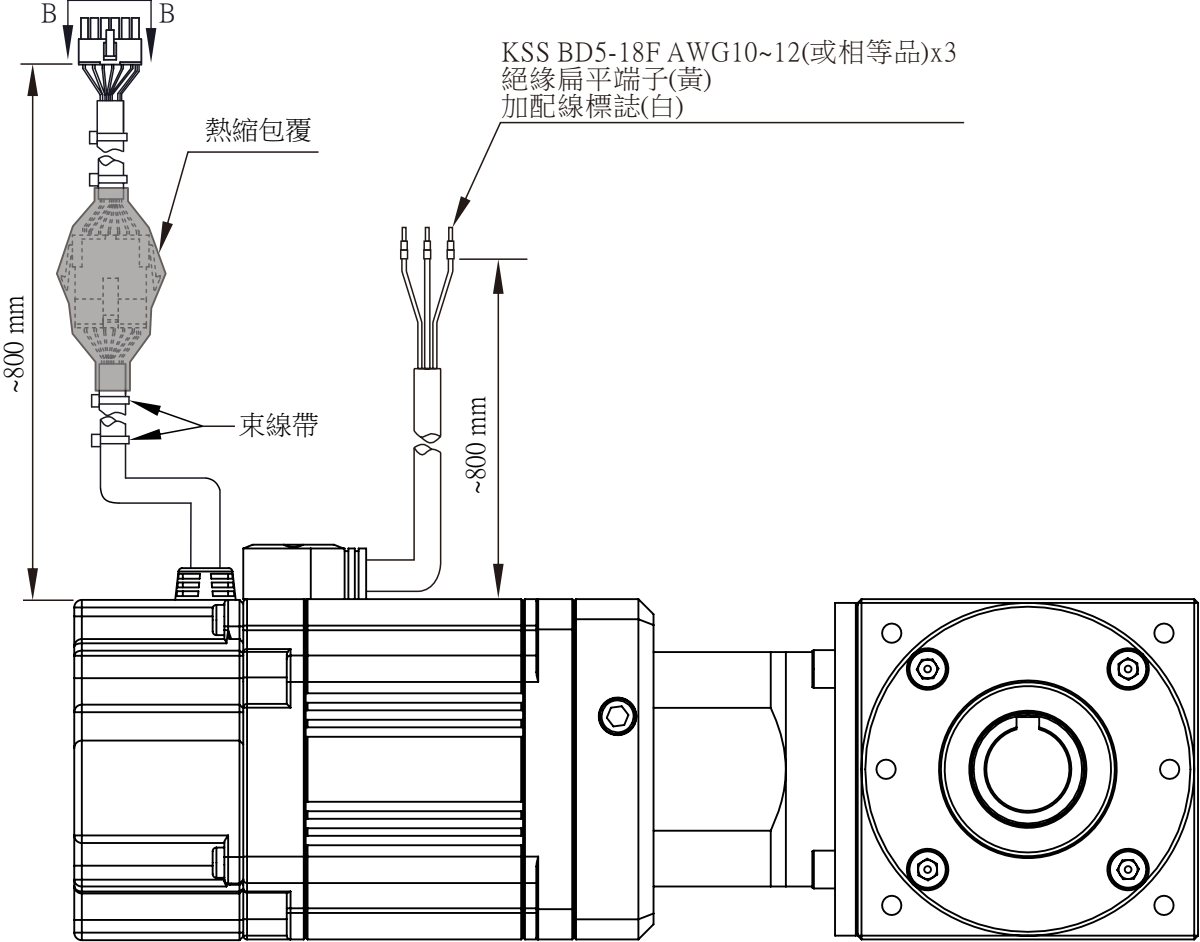
創盟電子工業股份有限公司  
TRUMMAN TECHNOLOGY CORP

型號(MODEL)	EVM5K35030E-STC20F2T2-01
DWG NO.	SD-06-S0339

PD12-I30002 腳位定義 ( Pin Function )			
PIN	功能 (Function)	線色 (Color)	線規 (Reamrk)
1	Shield	隔離網(Braid)	UL 2464 Cable, 80℃, 300V, AWG 24x5P. 耐撓曲電纜, (5x(2x0.25 <sup>2</sup> )) 對絞有隔離網, (Whitie, Red) (Black, Green) (Yellow, Blue) (Gray, Orange) (Purple, Brown)
2	OT-	黑(Black)	
3	Z / W	藍(Blue)	
4	B / V	灰(Gray)	
5	A / U	綠(Green)	
6	GND	白(White)	
7	Null	X	
8	OT+	紫(Purple)	
9	Z / W	紅(Red)	
10	B / V	粉(Pink)	
11	A / U	黃(Yellow)	
12	+5V	棕(Brown)	



馬達動力線 線色定義 (Pin Function)		
功能(Function)	線色(Color)	線規(Remark)
U	紅 (Red)	105℃, 300V 12AWGx3C 耐油曲, OD:8.5
V	白(White)	
W	黑(Black)	



型號(MODEL)	EVM5K35030E-STC20F2T2-01
DWG NO.	SD-06-S0339

NOTES		THIRD ANGLE PROJECTION
TOLERANCE TO BE FOLLOWINGS UNLESS OTHERWISE BE SPECIFIED:		
LENGTH (mm)	TOLERANCE	UNIT: mm
0~30 (included)	±0.20mm	SHEET NO: 3/3
30~120 (included)	±0.30mm	
120~315 (included)	±0.50mm	SCALE: ---
315~1000 (included)	±0.80mm	SIZE: A4
OVER 1000	±1.20mm	



創盟電子工業股份有限公司  
TRUMMAN TECHNOLOGY CORP